

# Townfield Primary School

## Weekly Update



**Thursday 18th July 2024**

A fantastic year all round! Again, we have great SATs results. We've been extremely busy with trips and visitors, with a successful residential at Robinwood. We've had another great 'Inspirational Sports Day' and many of our children take part in other competitions such as the Debate Academy. It's surprising how we have fitted everything in!

### Staff Updates

As mentioned in the new classes letter, we have appointed two new teachers who are really excited to work at Townfield. Miss Lawson who will be teaching in Year 3 and Mr Murphy who will teach in Year 5.

Miss Dowling will be leaving us to work abroad, we will be sad to see her go.

Miss Byatt will be leaving for maternity leave, we wish her the very best and look forward to her return.

### Thank you

I would like to say a huge thank you and well done to all our children. This year they have worked so hard and I think from looking at the newsletter, they've had a lot of fun.

Thank you to my staff at Townfield who have also worked considerably hard over the past year especially during the time we have supported Well Lane Primary.

We wish Year 6 the best of luck as they move onto secondary school, I'm sure they will be amazing!



## Reminders

School uniform- Our children look great in September however branded clothing keeps turning up and this includes named trainers. I really don't mind your child wearing black trainers but no Nike ticks or Adidas stripes should be seen. Hoodies are only allowed in the forest, they haven't ever really been part of the school uniform.



School finishes tomorrow, Friday 19th July at 1.30pm.

All children will return to school on Tuesday 3<sup>rd</sup> September at 8.50am prompt.

I'm really looking forward to another very successful year at Townfield Primary. Have a safe, fantastic and restful Summer.

Enjoy!

## New Classes September 2024



Old Class	New Class	Teacher
RM	1D	Mrs Dixon
RJ	1C	Mrs Carey
1C	2MJ	Mrs Mathieson/Mrs Jones
1D	2JB	Mrs Buckley/Mrs Jones
2B	3L	Miss Lawson (Maternity cover for Miss Byatt)
2JB	3S	Mrs Simmons
2MJ	3C	Ms Carr
3M	4M	Mr McNally
3C	4R	Mr Rosser
3S	4H	Miss Hughes
4H	5M	Mr Murphy
4D	5W	Miss Williams
5W	6C	Mr Chalmers
5R	6P	Miss Parry

**Woodland Learning- Mrs Hancox and Mrs Walker,  
School Cover- Mrs James and Mrs Sadler**

**We are really pleased and excited to welcome some new teachers, Mr Murphy and Miss Lawson.**

**We would like to thank Miss Dowling who is leaving to work abroad, we will miss her and wish her the very best.**

**Miss Byatt will also be leaving school for a few months to start her maternity leave, we are all looking forward to the new arrival.**

**As Mrs Durham, Mrs Kinnear and I continue to support Well Lane Primary, we have increased our leadership capacity at Townfield Primary. With this, we would like to congratulate Miss Parry who has been successful in her application of interim Assistant Headteacher.**

**We have additional leaders in school who will, after the class teacher, be a point of contact.**

**These staff members will be:**

**Mrs Duckitt- Nursery and Reception**

**Mrs Dixon- years 1 and 2**

**Mr Rosser- years 3 and 4**

**Mr Chalmers- years 5 and 6**

### **School Start and Finish Times for September**

**From September, school hours must increase to 32.5 hours per week by law. Therefore, we must slightly adjust the hours of the school day to accommodate. In order to have the minimum amount of impact to parents and carers, we will adjust as follows:**

#### **Start of school day**

**Gates open: 8:30am**

**School doors open: 8:40am (previously 8:45am)**

**School doors shut and registers taken at: 8:50am (previously 8:55am)**

#### **End of school day**

**Gates open: 3pm**

**End of school day for Nursery and Reception only: 3:15pm**

**End of school day Y1 -Y6: 3:20pm (previously 3:15pm)**





## Year 6 Leavers Assembly

Year 6 celebrated their leavers' assembly today with lots of parents and loved ones. The children performed poems, songs and shared a special 'holiday' themed video with our parents. It was a fantastic send off to a brilliant year group!





## Townfield Achievements

We have many talented footballers in 2B! Well done to Ella, Jack and Benson for winning these awards - we are very proud of you all!

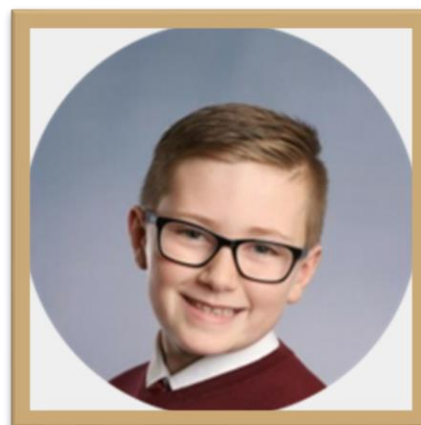


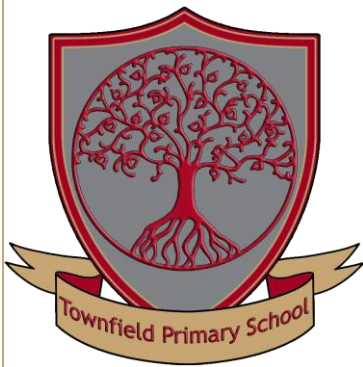
|

Billy Atherton in 5R has been selected to represent Wirral primary school boys again this year.

Over 170 boys had trials and Billy made it into a squad of 14!!

Well Done and Good luck Billy





## PE Timetable

2024/2025

Nursery	Friday			
RC	Thursday		RJ	Thursday
1D	Monday		1C	Tuesday
2JB	Tuesday		2MJ	Wednesday
3L	Friday		3S	Wednesday
3C	Friday		4M	Thursday
4R	Monday		4H	Wednesday
5W	Tuesday		5M	Thursday
6P	Friday		6C	Wednesday

**PE WILL COMMENCE TUESDAY 3rd SEPTEMBER**

**Children should arrive at school wearing their PE Kit on days  
they are timetabled for PE.**



## Woodland Learning

### Timetable

2024/2025

Nursery	Wednesday			
RC	Friday		RJ	Friday
1D	Wednesday		1C	Friday
2JB	Monday		2MJ	Tuesday
3L	Tuesday		3S	Thursday
3C	Monday		4R	Wednesday
4M	Friday		4H	Thursday
5W	Monday		5M	Tuesday
6P	Wednesday		6C	Thursday

**WOODLAND LEARNING WILL COMMENCE TUESDAY 3rd SEPTEMBER**

Children should arrive at school wearing their PE Kit on days they are timetabled for Forest with their Forest Uniform including wellies in a separate bag.



## Updated attendance information from the DFE and Wirral local authority

From September 2024, the rules and fixed penalty notices for taking unauthorised holidays during term time have been updated. Please read the following information from the DFE:

<https://educationhub.blog.gov.uk/2024/02/29/fines-for-parents-for-taking-children-out-of-school-what-you-need-to-know/>

Wirral have also produced the attached letter to explain how the rules and penalties work in Wirral. We have sent this separately.

## hatch Service Update

hatch have made a few changes to their service since moving into their new building.

hatch is for children aged 8-16 years, who are looking for early help and support for emotional wellbeing, worry, generalised low to moderate anxiety, low mood and depression.

hatch offer three skills-based programmes, including CBT principles, mindfulness and weekly tasks to be completed at home. Their programmes are designed to develop understanding of self, thoughts and emotions, and equip children with the skills and tools they need to make positive changes and build resilience.

A programme will be allocated to each child based on their needs, age and emotional understanding.

The programmes hatch provide are delivered by their team of wellbeing coaches and volunteer mentors who are trained in delivering those very specific and prescriptive programmes only. Children will be paired with a mentor who they will work with weekly throughout the duration of the programme. Typically, children will access between 6-8 weeks of 1-1 support.

Although they do their best to make the service as accessible as possible, they're not able to





provide specific support for challenges presented in young people with ASD and ADHD, or offer guidance on managing those behaviours as part of the programmes that they deliver.

**Service user requirements:**

- Families and young people must be willing and able to travel each week to the site in Birkenhead. There are train and bus routes close by - Hamilton Square and Argyle Street.
- Parent/carers must be open to telephone communication and commit to responding to communication from the team.
- Children must be willing to engage with the sessions, work with their mentor and be open to practicing the skills taught throughout the programmes.
- Sessions run for between 6-8 weeks, on the same day and time each week.
- All children and parent/carers are invited to, and must attend, an initial visit. This will be arranged via telephone call.
- Parental consent is required for all children accessing the service.

**Please note:**

hatch are not an intervention for aggression or behaviour concerns.

They do not offer counselling/talking therapy and they are not a clinical service. They are unable to provide specialised support for the following areas:

- Eating disorders
- Domestic abuse
- Sexual abuse
- Bereavement

**Other information:**

- Opening hours: Mon-Thurs 9.15am-6.15pm, Fri 9.15am-3.15pm
- Location: 18 Trinity Chambers, Ivy Street, Birkenhead. CH415EF.
- All sessions are carried out on the first floor, accessible via two flights of stairs.

**E:** [info@hatchmerseyside.co.uk](mailto:info@hatchmerseyside.co.uk)

**W:** [www.hatchmerseyside.co.uk](http://www.hatchmerseyside.co.uk)



Community Capacity  
Builders CIC

# FUNDED SEND PARENTAL TRAINING SESSIONS

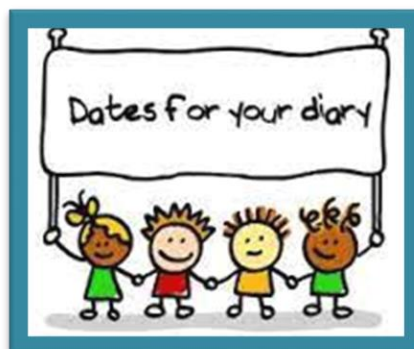
Tracy Rowland, will be delivering 3 fully funded 2 hour sessions in August at Clare Mount Specialist Sports College, Leasowe for parents/carers of NEURODIVERSE children. Tracy's worked with youngsters with SEND for over 25 years and supported pupils/families to access the support they need and worked with them on strategies to remove barriers to education and life outside school.

Mon 12th August (10-12noon) - AUTISM  
Tues 13th Aug (10-12 noon) - SENSORY ISSUES  
Wed 14th Aug (10-12 noon) - ADHD

All 3 sessions can be attended or just attend those relevant to you.



If you are interested in booking a place  
please contact:  
[communitycapacitybuilders19@gmail.com](mailto:communitycapacitybuilders19@gmail.com)



Friday 19 <sup>th</sup> July	Year 6 Fun Day 9.00am – 13.00pm
Friday 19 <sup>th</sup> July	School Closes at 13.30pm
Monday 22 <sup>nd</sup> July	Inset Day
Tuesday 23 <sup>rd</sup> July	Inset Day
Monday 2 <sup>nd</sup> September	Inset Day
Tuesday 3 <sup>rd</sup> September	Pupils Return to School at 8.45am
Wednesday 18 <sup>th</sup> December	Pantomime Floral Pavillion



## Term Dates September 2024 – July 2025

Autumn Term 2024	
<b>Inset Day</b>	Monday 2nd September 2024
<b>Open</b>	Tuesday 3rd September to Friday 25 <sup>th</sup> October
<b>Closed</b>	Monday 28 <sup>th</sup> October to Friday 1 <sup>st</sup> November
<b>Open</b>	Monday 4 <sup>th</sup> November to Friday 20 <sup>th</sup> December * *School finishes at 1:30 pm
<b>Closed</b>	Monday 23 <sup>rd</sup> December to Friday 3 <sup>rd</sup> January
Spring Term 2025	
<b>Inset Day</b>	Monday 6 <sup>th</sup> January 2025
<b>Open</b>	Tuesday 7 <sup>th</sup> January to Friday 14 <sup>th</sup> February
<b>Closed</b>	Monday 17 <sup>th</sup> February to Friday 21 <sup>st</sup> February
<b>Open</b>	Monday 24 <sup>th</sup> February to Friday 4 <sup>th</sup> April* *School finishes at 1:30 pm
<b>Closed</b>	Monday 7 <sup>th</sup> April to Monday 21 <sup>st</sup> April
Summer Term 2025	
<b>Open</b>	Tuesday 22 <sup>nd</sup> April to Thursday 22 <sup>nd</sup> May
<b>Inset Day</b>	Friday 23 <sup>rd</sup> May
<b>Bank Holiday</b>	Monday 5 <sup>th</sup> May
<b>Closed</b>	Monday 26 <sup>th</sup> May to Friday 30 <sup>th</sup> May
<b>Open</b>	Monday 2 <sup>nd</sup> June to Friday 18 <sup>th</sup> July* *School finishes at 1:30 pm
<b>Inset Day</b>	Monday 21 <sup>st</sup> July
<b>Inset Day</b>	Tuesday 22 <sup>nd</sup> July



*Look after  
yourself*

*Look after  
each other*

*Look after  
our school*